



Pioneer BDP-320/LX52/23FD

Installation Manual

Please note that this modification to your player invalidates any warranty that may already exist on your player.

Introduction

Installing this modification is difficult. It requires soldering to some very small components on the mainboard of this player.

You will require a

- Fine tip soldering iron (max 25 watt)
- Solder with flux core.
- Some lengths of thin wire
- Philips screwdriver
- Double sided tape.

General information

The installation of the ICOS HD Multi region chip is difficult. If you are not experienced with soldering, please let us install the kit for you.

This modification is done entirely at your own risk. We do NOT accept any liability in the event of damage to your BD-player in the process of installation of the chip or in the usage of the modification.

If you have never used a soldering iron or are not competent with it, please do not attempt to perform this modification.

We recommend you read this manual **completely** before installing this modification.

Opening your player

First make sure that your player is **disconnected from the mains** before you even start opening the player.

If you set the unit in front of you with the display towards you there are 5 screws at the back of the player. Remove them using a Philips screwdriver.

Remove the two big screws at both the left and right side.

Remove the top cover, by gently lifting the back of the cover up, until it comes free.

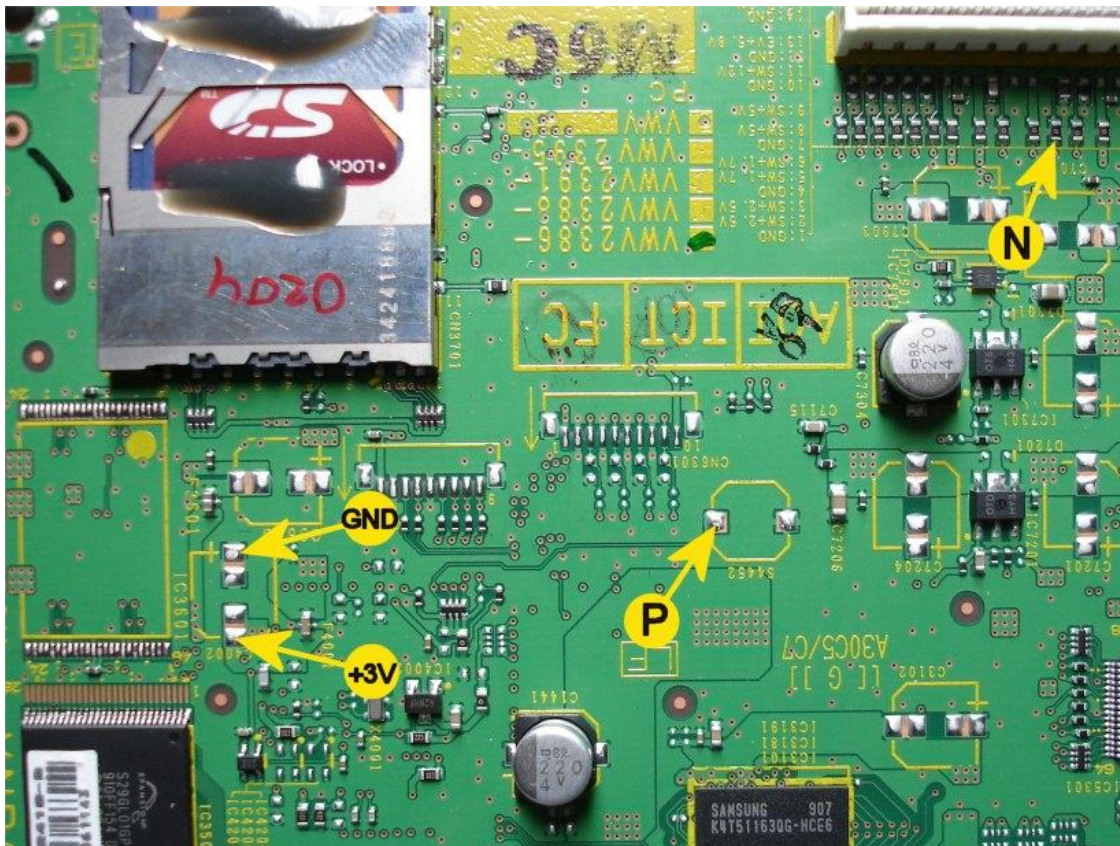
Disassembly

After removing the top cover, you will see the green mainboard. All connections are made on this mainboard.

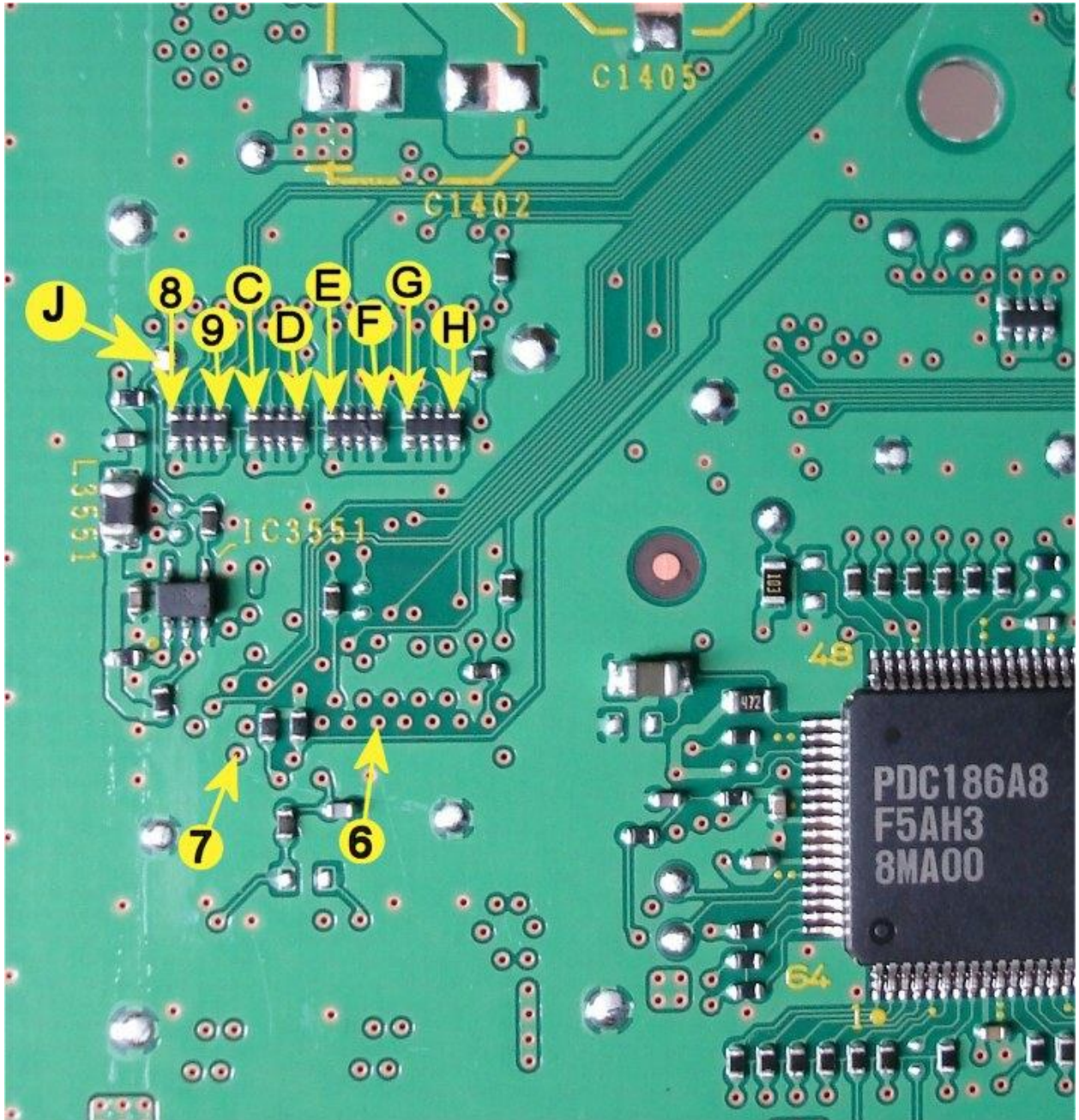
Remove all the screws that hold the mainboard in place. Don't forget the screws at the back of the player.

Pull out all the plugs and cables connecting to this board, and take out the board.

Installing the logic board



Stick the logic board near the flash chip, and connect wires from points GND, 3V3, N and P to the corresponding points on the logic board.

Mainboard connections (bottom):

Solder wires to points 6,7,8,9,C,D,E,F,G,H and J and connect them to the corresponding points on the logic board.

Make sure you keep the wires as short as possible.

Install the mainboard in the player, and reconnect all wires/cables. Don't forget the heatsink!

The installation is now done!

Region Programming

While the player is in standby, press the blue button on the remote. The blue LED on the logic board will become lit.

Power on the player. The player might display UNKNOWN DISC. this is OK.

Now use a Pioneer service remote, and enter the following sequence:

ESC-AMON-TEST- 0-2-0-3

wait till the player displays MODEL OK, then enter:

ESC-AMON-TEST- 0-2-0-1

wait till the player displays MODEL OK, then enter:

ESC-AMON-TEST- 0-2-0-4

wait till the player displays MODEL OK, then power down the player.

Now use the normal remote, and press '1' (red led will lit), power up the player. proceed with the setup navigator.

Now setup the correct model number for your player:

| | |
|------------------------|-----|
| 0201: Pioneer BDP-320 | EU |
| 0204: Pioneer BDP-320 | USA |
| 0217: Pioneer BDP-LX52 | EU |
| 0219: Pioneer BDP-23FD | USA |

Use the service remote to enter:

ESC-AMON-TEST- followed by one of the above numbers for example 0-2-0-1 for a European BDP-320.

Power down the player.

The Blu-ray modification is now finished.