



# Pioneer BDP-LX71/51FD/05FD

## Installation Manual

---

***Please note that this modification to your player invalidates any warranty that may already exist on your player.***

### ***Introduction***

Installing this modification is difficult. It requires soldering to some very small components on the mainboard of this player.

You will require a

- Fine tip soldering iron (max 25 watt)
- Solder with flux core.
- Some lengths of thin wire
- Philips screwdriver
- Double sided tape.

### ***General information***

The installation of the ICOS HD Multi region chip is difficult. If you are not experienced with soldering, please let us install the kit for you.

**This modification is done entirely at your own risk. We do NOT accept any liability in the event of damage to your BD-player in the process of installation of the chip or in the usage of the modification.**

**If you have never used a soldering iron or are not competent with it, please do not attempt to perform this modification.**

We recommend you read this manual **completely** before installing this modification.

## Opening your player

First make sure that your player is **disconnected from the mains** before you even start opening the player.

If you set the unit in front of you with the display towards you there are 4 screws at the back of the player. Remove them using a Philips screwdriver.

Remove the two big screws at both the left and right side.

Remove the top cover, by gently lifting the back of the cover up, until it comes free.

## Disassembly

After removing the top cover, you will see the Audio output board, and below that, the mainboard. All connections are made on this mainboard.

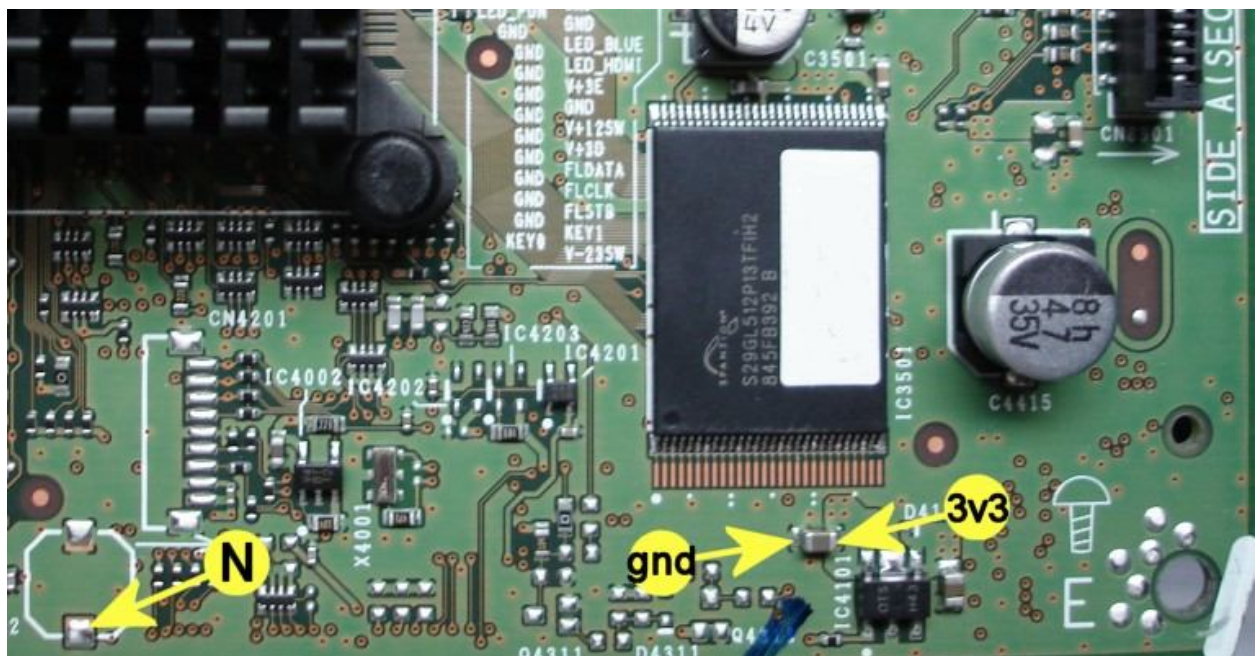
Remove the Audio output board, by disconnecting the flatcable connecting it to the mainboard. Remove the two screws, and then remove all the screws at the back of the player. Take out the board.

Now you have better access to the mainboard.

Remove all the screws that hold the mainboard in place. Don't forget the screws at the back of the player.

Pull out all the plugs and cables connecting to this board, and take out the board.

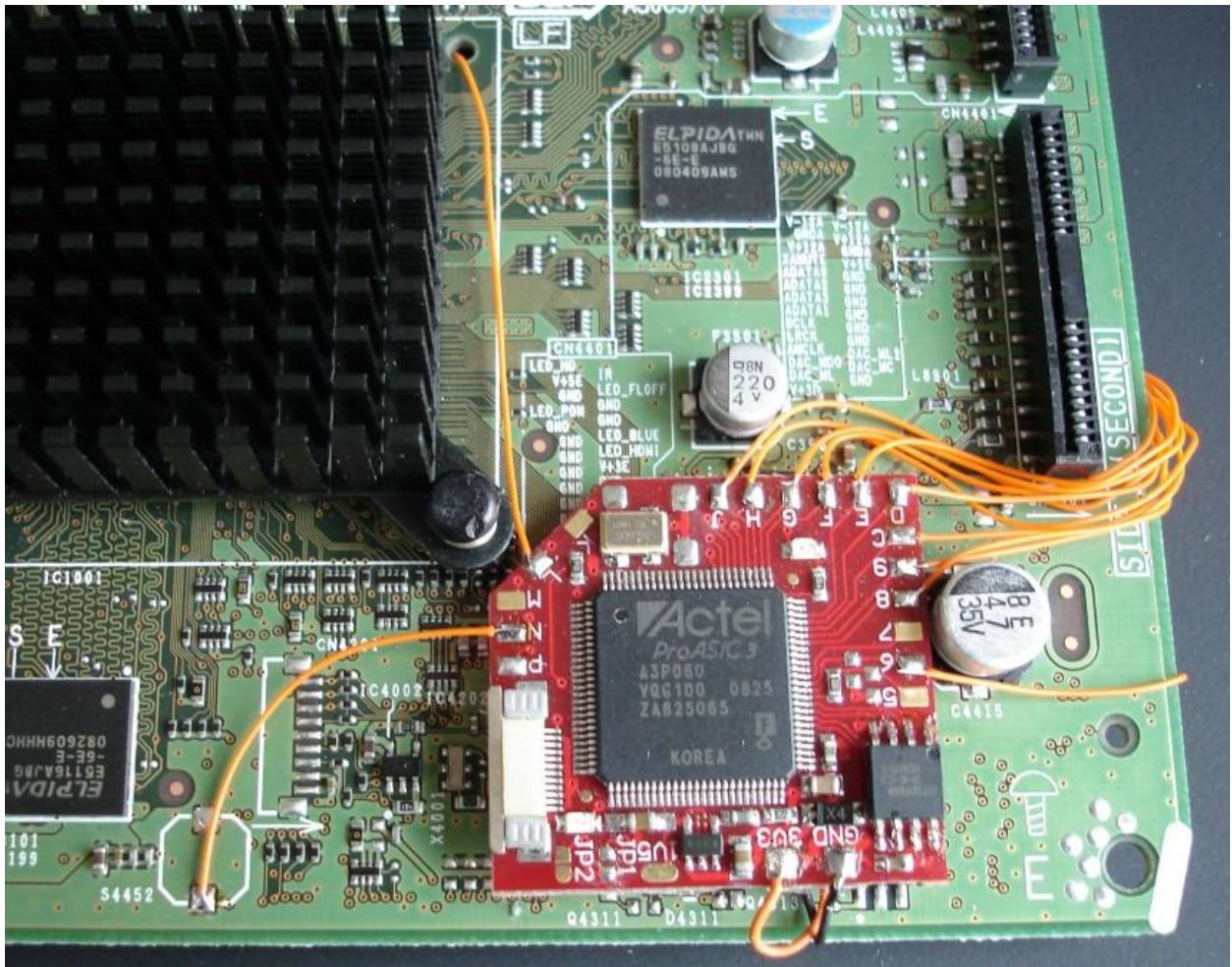
## Power connections



Start with soldering two small wires to points 3v3 and GND. These connections won't be accessible anymore once you stick the logic board in place.

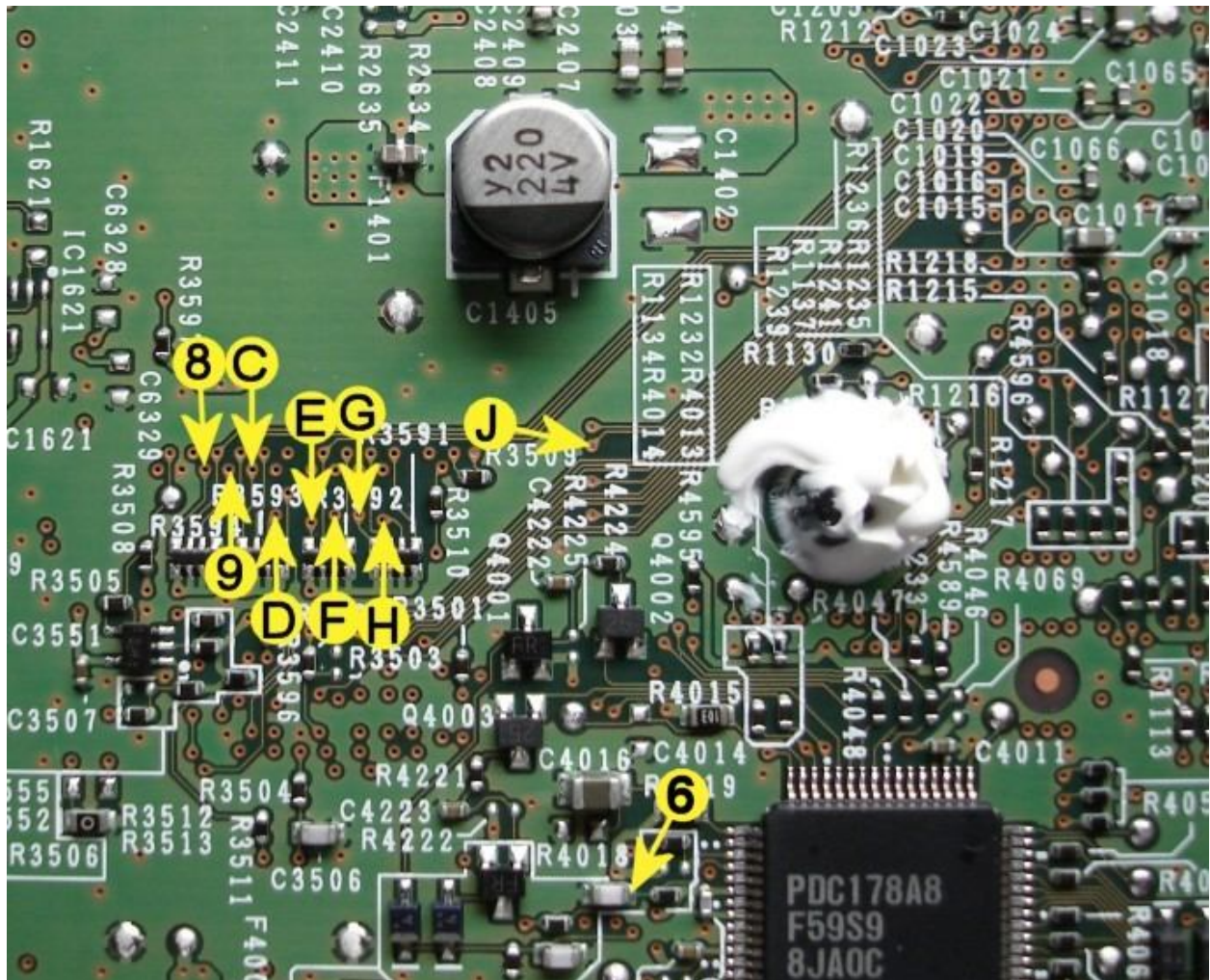
### Installing the logic board

Stick the Logic board with some double-sided tape onto the mainboard (see picture below), and connect wires from points GND, 3V3 and N to the corresponding points on the Logic Board.



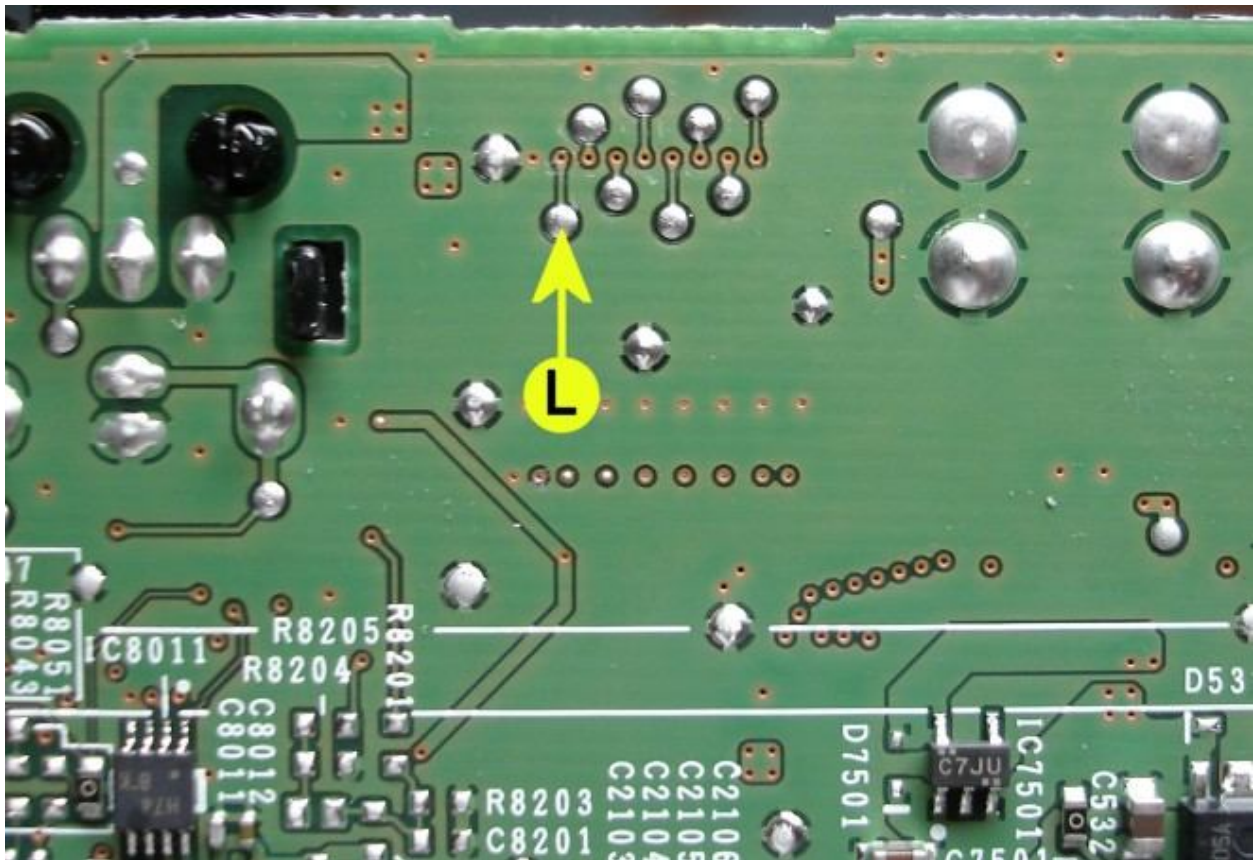
The remaining connections are all made on the underside of the mainboard.



**Mainboard connections (bottom):**

Solder wires to points 6,8,9,C,D,E,F,G,H and J and connect them to the corresponding points on the logic board.

Make sure you keep the wires as short as possible.



The last connection is L, solder a wire to the corresponding point on the logic board. You can route it through a hole in the board to the other side.

Install the board in the player, and reconnect all wires/cables.

The installation is now done!

### ***Region Searching***

After connecting the player to Mains, a Blue led should be lit. This indicates that the logic board does not contain region information yet.

Power up the player, the Red led will become lit as well. Both the Blue and Red LED are now lit.

The Red LED should go off in about 15 seconds. And will start flashing occasionally.  
*If this does not happen, please check the Mainboard connections.*

The drive makes some noise every 20 seconds, and the Red LED will continue to flash occasionally.

This indicates it's searching for the Regions. This can take 1-3 hours.

Once the Blue led goes off, the region searching is finished, and region information is stored on the logic board. You can now start using your Multiregion Blu-ray player.